

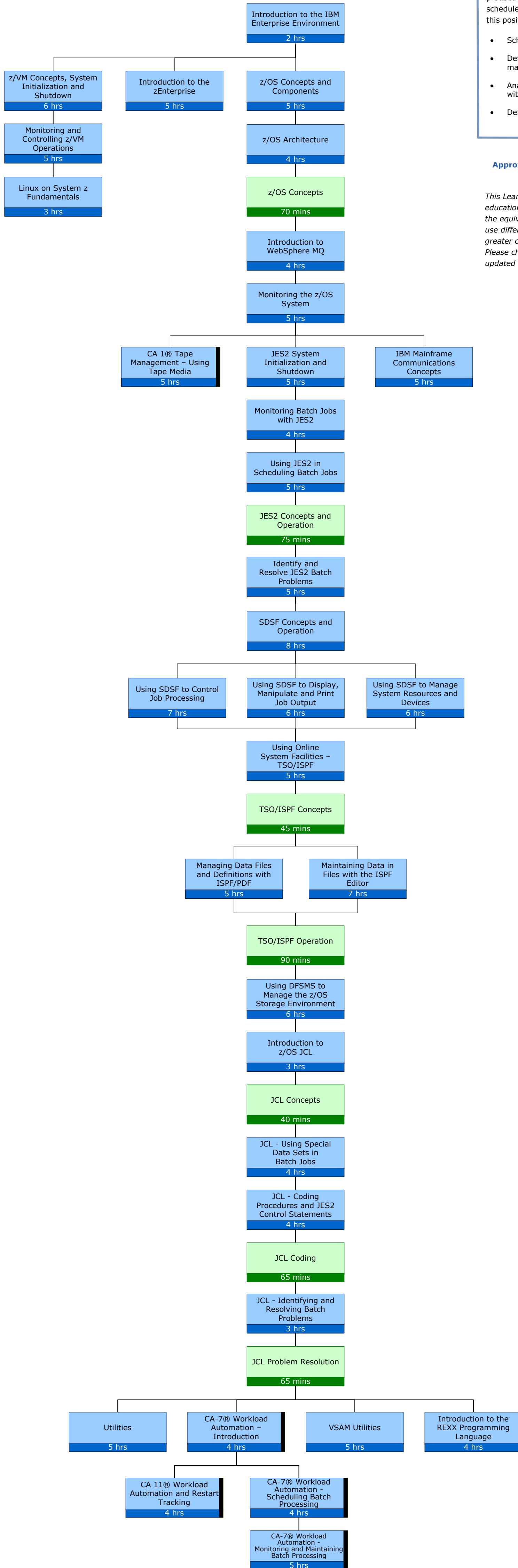


The production scheduler is responsible for ensuring production batch processing deadlines and schedules are met. Typical duties associated with this position are:

- Scheduling of production batch jobs
- Defining new production batch schedules and maintaining existing ones
- Analysing and resolving problems associated with batch jobs and job output
- Defining restart requirements for batch jobs

Approximate number of training hours - 171

This Learning Plan represents an industry standard education plan for this job role. Please note that the equivalent job role at your organization may use different software applications or require greater or lesser levels of expertise in any area. Please check our site regularly to see what new or updated courses have been added to this plan!



- Datatrain e-Learning Courses
- Datatrain Skills Assessments
- Indicates that other courses can be substituted for this one

